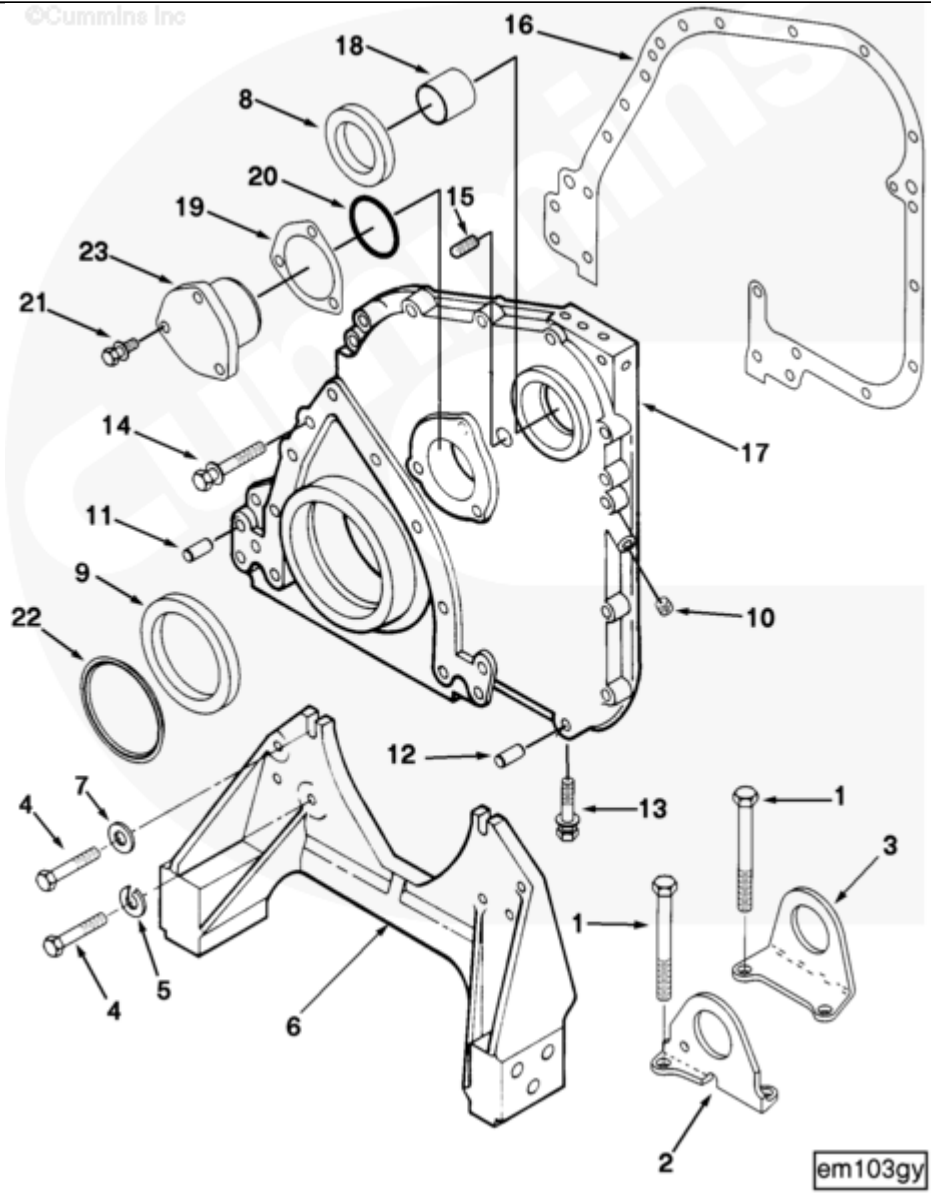




Parts Catalog - Option Detail

Electronic Parts Catalog - Option Detail				
Option	Group	Graphic	Film Card	Date
EM1093	01.09	em103gy	F	15-FEB-95
Engines	NH/NT 855, NT495, NT743, NTA855 N106			



[SMALL](#) | [MEDIUM](#) | [LARGE](#)

Cart	Ref No	Part Number	Part Description	Required	Remarks
View My Cart					
		EM1093	Engine Mounting		

					Engine Mounting
					Wide span marine pad type
					front support having pads
					with multiple tapped holes
					that duplicate location of
					lower flywheel housing pads.
					Compatible with marine
					mounting feet. Includes bare
					engine lifting brackets and
					special marine type cast
					iron gear cover. Can only be
					used with damper arrangements
					that have the sea water pump
					driving pulley. Lifting
					brackets located between
					front and middle rocker arm
					cover and back of rear
					rocker arm cover.
<input type="checkbox"/>	1	S 176	Hexagon Head Cap Screw	4	1/2 - 13 x 5 in.
<input type="checkbox"/>	2	170226	Lifting Bracket	1	
<input type="checkbox"/>	3	3001726	Lifting Bracket	1	
<input type="checkbox"/>	4	S 169 B	Hexagon Head Cap Screw	8	7/16 - 20 X 3 3/4 Inch.
<input type="checkbox"/>	5	S 610	Lock Washer	6	7/16 in.
<input type="checkbox"/>	6	3010347	Front Engine Support	1	
<input type="checkbox"/>	7	3600283	Plain Washer	2	3/8 in.
<input type="checkbox"/>	8	3020185	Oil Seal	1	
		3020186	Oil Seal	1	
<input type="checkbox"/>	9	3020183	Oil Seal	1	
<input type="checkbox"/>	10	S 911 B	Pipe Plug	2	1/8 NPT

<input type="checkbox"/>	11	60408	Pin Dowel	1	
<input type="checkbox"/>	12	70653	Diamond Dowel	1	
<input type="checkbox"/>	13	3011711	Captive Washer Cap Screw	7	7/16 - 20 X 2 Inch.
<input type="checkbox"/>	14	3011714	Captive Washer Cap Screw	13	7/16 - 20 X 3 Inch.
<input type="checkbox"/>	15	3013786	Pipe Plug	1	3/8 NPT.
<input type="checkbox"/>	16	3067618	Gear Cover Gasket	1	
<input type="checkbox"/>	17	3036125	Gear Cover	1	
<input type="checkbox"/>		3351284	Gear Cover	1	
<input type="checkbox"/>	18	132770	Bushing	1	
		3060301	Cam Thrust Mounting Support		
<input type="checkbox"/>	19	65259 A	Shim	1	
<input type="checkbox"/>	19	65259 B	Shim	1	
<input type="checkbox"/>	19	65259 C	Shim	1	
<input type="checkbox"/>	19	185573	Shim	1	
<input type="checkbox"/>	20	215705	O-Ring Seal	1	
<input type="checkbox"/>	21	3011715	Captive Washer Cap Screw	3	3/8 - 16 X 1 3/16 in.
<input type="checkbox"/>	22	3076203	Dust Seal	1	
<input type="checkbox"/>	23	3008530	Camshaft Thrust Support	1	